

### Notes for Figure 6H-37—Typical Application 37

#### Double Lane Closure on a Freeway

##### Standard:

1. An arrow board shall be used when a freeway lane is closed. When more than one freeway lane is closed, a separate arrow board shall be used for each closed lane.

##### Guidance:

2. Ordinarily, the preferred position for the second arrow board is in the closed exterior lane at the upstream end of the second merging taper. However, the second arrow board should be placed in the closed interior lane at the downstream end of the second merging taper in the following situations:
  - a. When a shadow vehicle is used in the interior closed lane, and the second arrow board is mounted on the shadow vehicle;
  - b. If alignment or other conditions create any confusion as to which lane is closed by the second arrow board; and
  - c. When the first arrow board is placed in the closed exterior lane at the downstream end of the first merging taper (the alternative position when the shoulder is narrow).

##### Option:

3. Flashing warning lights and/or flags may be used to call attention to the initial warning signs.
4. A truck-mounted attenuator may be used on the shadow vehicle.
5. If a paved shoulder having a minimum width of 10 feet and sufficient strength is available, the left and adjacent interior lanes may be closed and vehicular traffic carried around the work space on the right-hand lane and a right-hand shoulder.

##### Guidance:

6. When a shoulder lane is used that cannot adequately accommodate trucks, trucks should be directed to use the normal travel lanes.

##### Option:

7. For Short-Term applications, when post mounted signs are not used, the distance legend may be shown on the sign face rather than on a supplemental plaque.
8. Distance plaques or Advisory Speed plaques may be added below the RIGHT/LEFT LANE CLOSED signs.

### Notes for Figure 6H-38—Typical Application 38

#### ~~Interior Lane Closure on a Freeway~~ DELETED

Figure 6H-37. Double Lane Closure on a Freeway (TA-37)

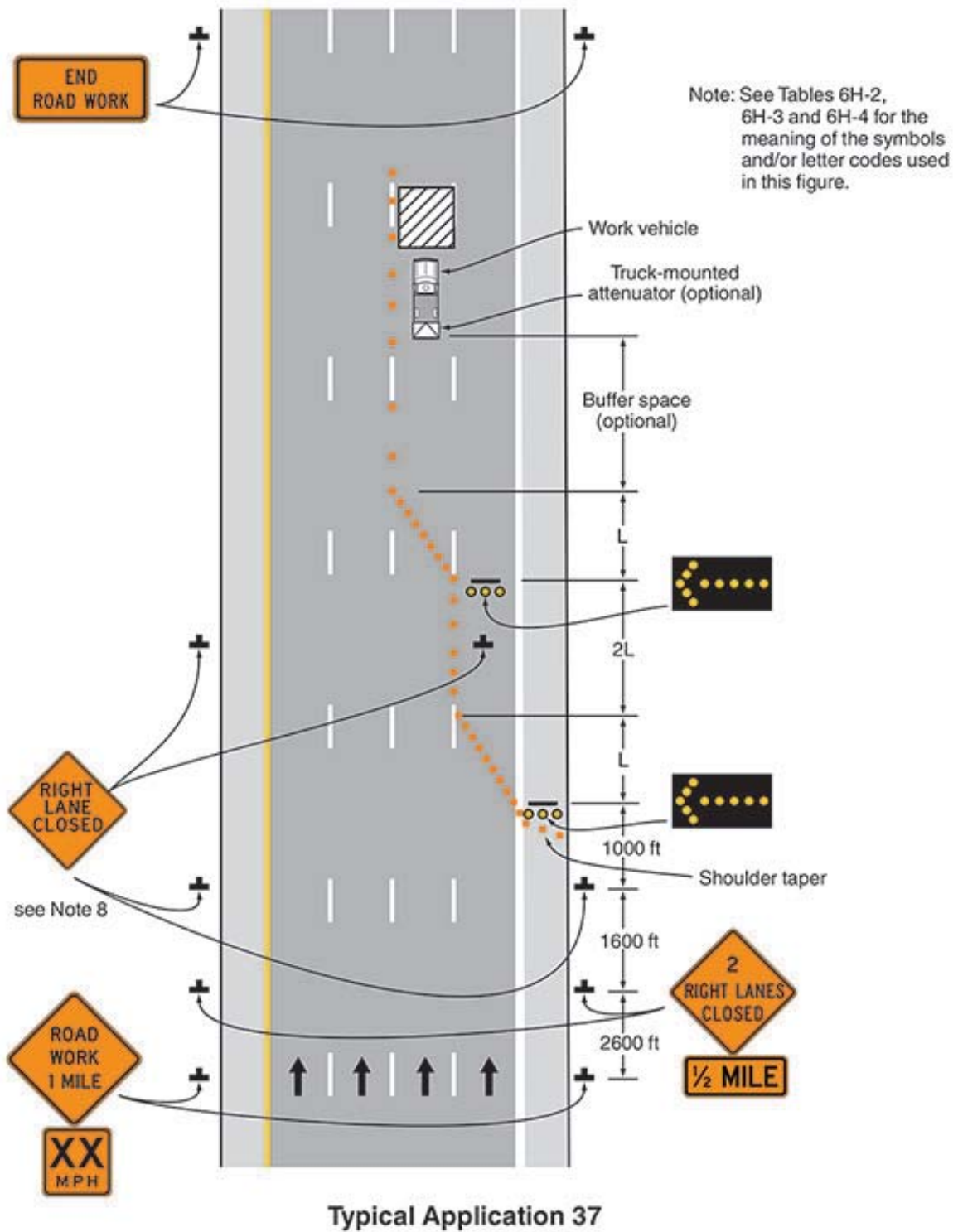


Figure 6H-38. DELETED